

Brentwood Hills Gazette

Security Issues Raised in Brentwood Hills

It is probably no surprise that Brentwood Hills is still one of the most crime-free parts of the City of Los Angeles. Unfortunately that's the reason the L.A.P.D. provides when asked why they are diverting resources (patrol cars, detectives, etc.) from the West L.A.P.D. station to other more "needy" or "deserving" parts of the City.

Regrettably, we have very limited police presence in Brentwood. At a community meeting on January 25, the Police captain made no apologies for this lack of protection and politely (but firmly) explained that we must yield police resources to other "needier" parts of the City.

Brentwood Hills is not, in fact, crime-free. Late last year there was a home-invasion robbery on Bayliss in which the couple was tied up and terrorized while the robbers cleaned out the house. Recently a home on mid-Westridge was broken into, ransacked, and burglarized in BROAD DAYLIGHT. A short time ago, cars were stolen off both Cordelia and Ponderosa, and there have been several random acts of vandalism throughout the neighborhood including eggings, mail theft (resulting in ID theft) and other petty larceny.

Years ago, this Homeowners Association contracted for protection for our community from Westec, which then was acquired by Edison, and later acquired by ADT. ADT then merged with our current most commonly-used patrol service, Bel Air Patrol. Today, the quality of the service provided by Bel Air is considered by many to have degraded to unacceptable levels. This being the case, the Brentwood Hills Homeowners Association would like to ask for your help.

**WE NEED YOUR FEEDBACK TO DETERMINE IF THE MAJORITY OF HOMEOWNERS
ARE INTERESTED IN A SECURITY CHANGE**

**PLEASE READ THE ENLOCSURE, FILL OUT THE QUESTIONNAIRE, AND MAIL IT
BACK TO US BY MARCH 15, 2005 USING THE
SELF-ADDRESSED STAMPED ENVELOPE**

THANK YOU!!!

Included In This

Issue:

- Security Issues Raised in Brentwood Hills
- Preserving the Santa Monica Mountains
- Got EGGS? Recent Vandalism in the Hills
- Canyonback Road Gates
- Rat Poison-KEEP YOUR PET SAFE
- Speed Demons!
- Doggie Etiquette
- Meet your BHHA Board
- Don't forget to send in your dues for 2005!!!

Preserving the Santa Monica Mountains

COOL FACT

DID YOU KNOW???

Los Angeles is the ONLY city in the world divided in two by a mountain range, the Santa Monica Mountains, and thus it is also the ONLY city divided by a national park

Los Angeles is unique in being the only major city in the world bisected by a mountain range. These, of course, are the beautiful Santa Monica Mountains, running from the Hollywood Bowl in the Calhuenaga Pass, to Point Mugu on the Pacific Ocean in Ventura County. We in Brentwood Hills, with our wonderful views of the canyons, city, and ocean, are an integral part of that 62-mile-long ecological resource. Therefore we who are lucky to

live in Brentwood Hills, care about what is happening to other parts of the Santa Monica Mountains.

The "crown jewel" of the Santa Monicas is Malibu Creek State Park, located at the intersection of Mulholland Highway and Las Virgenes / Malibu Canyon Road. A truly magnificent scenic spectacular of jagged peaks, swimmable lakes, and verdant oak meadows, this pristine wilderness has unfortunately been under assault for

nearly 10 years by a politically influential group proposing to build a massive university on the site.

Thanks to letter-writing and support from us, there is hope that the Santa Monica Mountains Conservancy may be able to purchase this property as public parkland. If you've never taken the time to visit and behold this wilderness, do so! And while you are picnicking, take a moment to reflect on how lucky you are to live in such a beautiful, scenic area of Los Angeles.



How Do You Remove Egg From a Car?

According to our sources (the internet) if you can get to it within about 30 minutes of being hit, soak it with a 50/50 solution of vinegar and warm water for about 10 minutes then gently scrape off. Alternatively, you will likely have to patronize a body shop as the egg will etch into the paint and create cracks and depressions

(We hope you NEVER have to do this!)

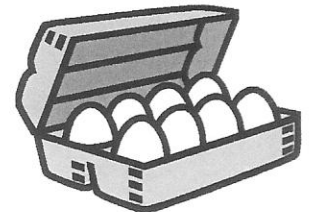
Got EGGS???? Got Egg Residue????

Recently our lovely neighborhood has experienced some not-so-lovely acts by petty vandals in the form of "eggings". Homes and cars have been pelted with eggs on several occasions, and while we are sure the "egggers" think these are harmless gags, they are really destructive acts of vandalism.

So, we ask all of our Brentwood Hills neighbors to check your egg supply—if it seems unusually low, have a chat with whomever you suspect could or might be the offender. Be sure to let him/her know that no one in the

neighborhood finds it amusing. We'd hate to have to call the police on one of our own! (if this is indeed the case...maybe they're out-of-towners...but let's cover all our bases, right?)

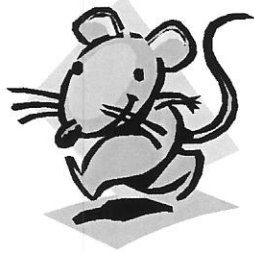
Let's all keep an eye out for each other. If you see anything suspicious, like, for instance, a guy or gal carrying several cartons of eggs, laughing hysterically while pelting unsuspecting neighbor's cars and homes, please report it immediately to Bel Air Patrol, the police, or both. You can also Email us at BHHA (president@brentwood-hills.org) as we'd LOVE to have a chat with them...or their parents...



Are YOU missing lots of these???

Can Controlling the Rat Population Endanger Your Pet?

Because we live within the Santa Monica Mountains, we have been asked by the wildlife experts from the Santa Monica Mountains National Recreation and Park Area—PLEASE DO NOT USE RAT POISON! It can kill unintended animals such as



Sure, he LOOKS friendly.....

squirrels, raccoons, dogs and cats.

In Simi Valley, the rangers found radio-collared cougars dead from ingesting rats who had eaten the poison. They also found deceased pet dogs who had wandered into the canyons and eaten the poisoned rats. Over-the-counter toxins meant only to kill rats, instead become lethal snacks for stray dogs, cats and predators.

The best way to control the rat population is to completely remove or confine IVY groundcover. The ivy provides protection for the rats because the rat's natural enemies such

as hawks, owls and coyotes cannot reach them when hidden in the foliage. The rats are also attracted to the ivy as it provides an abundance of insects for food.

We all want to keep the rats at bay, so let's try our best to do it the safest possible way!

STRANGE, UNNECESSARY FACT

Rats can jump four feet high and at least three feet laterally



The Proposed Gated Enclave at Canyonback Road

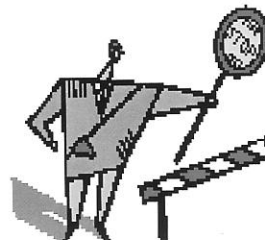
Close to home, another chunk of land in the Developer's cross-hairs is the Mountaingate community in the Sepulveda Pass north of Sunset. A portion of this development, the ridge-line "Canyonback Road", is in our line-of-sight from Brentwood Hills. The developer, Castle & Cooke (owned by David Murdock), is proposing to build a private gated enclave of 8 or 9 mansions, closing off a popular public fire road. This proposed gate will create an eyesore for everyone who has to look at the ridge-cut-

ting and gates. Long-time hikers and runners accustomed to proceeding from the end of Kenter Avenue to Mulholland, will also now find their pathway impeded. Since it lies in our view-shed and will block a portion of the trail and fire-road relied upon for access to the mountains in our neighborhood, Brentwood Hills and the Mandeville Canyon Association have an interest in this issue. The justification for another gated enclave of mansions in the Santa Monica Mountains is unclear—

a gate that will block open-space that we taxpayers have spent millions of dollars to acquire and safeguard. In our opinion, this is the wrong project, at the wrong time, in the wrong place, and it sets a bad precedent for Mandeville Canyon.

DEFINITION

Enclave (*noun*):
An enclosed territory that is culturally distinct from the foreign territory that surrounds it



A Publication of the Brentwood Hills Homeowners Association

**P.O. Box 49495
Los Angeles, CA 90049
www.brentwood-hills.org**

Speed Demons!

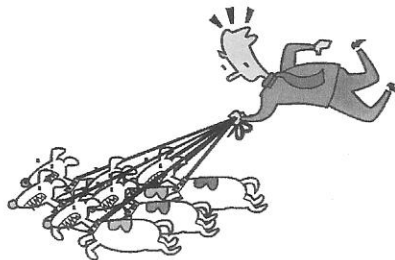
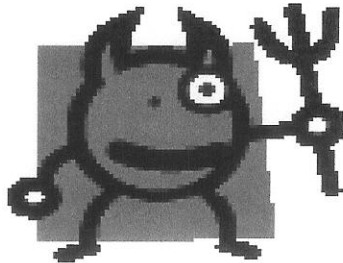
A friendly reminder to all our residents in Brentwood Hills to **please drive within the posted speed limit** (25 mph in most areas). Numerous children are at play in the streets as well as many exercise enthusiasts crossing the roads! We know that the hills are fun, and it is tempting to fly around the curves, but the narrow, windy roads can be very dangerous when taken too fast! Please remind your family members to heed the limits as well.

THANKS!

DON'T BE A SPEED DEMON!

Don't forget to support BHHA with your 2005 Dues! MAIL YOUR \$35 TO THE PO BOX TODAY!

Po Box 49495, LA 90049



Your Dues Help Us Bring You Cool Newsletters!

Your Dues Help Us Bring You Our Cool Annual Party!

Your Brentwood Hills Homeowners Association Board

Dominic LoBuglio President

Eric Edmunds Vice President

Nancy Levy Treasurer

Stu Krieger Secretary

Judy Dunn

Loretta Ditlow

Robert Levin

Sheila Greenberg

Judy Handler

Sue Keane

Mike Leslie

Arnold Levee

Randy Sherman

Bill Sullivan

Tom Brown

Doggie Etiquette

Also a friendly reminder to **please exercise doggie etiquette** when enjoying a walk with Fido in our lovely neighborhood.

This includes:

- *Keep your dog on a leash at all times when walking the streets.
- *Pick up after your canine companion once he has "done his business"
- *Dispose of your doggie bags properly—please do not leave them on the side of the road!

THANK YOU!